

# **COMFAST**

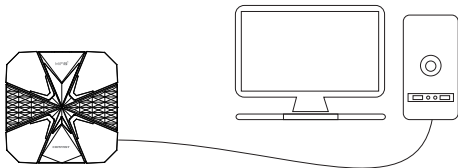
## **Quick installation Guide**



Driver Installation  
Version:V 1.0

# 1 Hardware installation

1-1. Plug the WiFi adapter into the USB port on the computer

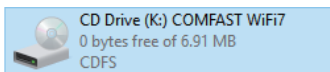


# 2 Drive installation

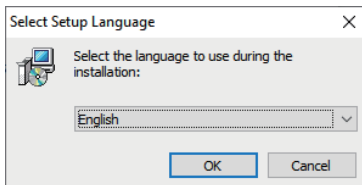
2-1. Open "This PC" on the desktop . Find the WifiAutoInstall driver disk.



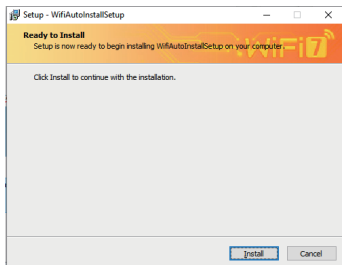
2-2. Double click on the CD-ROM Drive.



2-3. After running the file, Choose language as English and click "OK", continue to click "Install" to install, until the driver installation is complete.

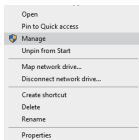


2-4. Click Install to install the program.

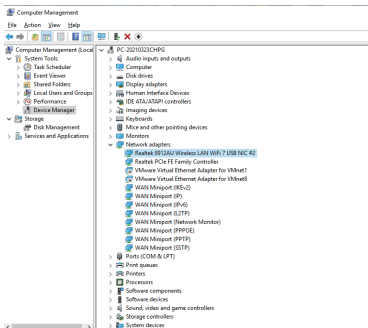


2-5. Please restart your computer after the driver installation is complete.

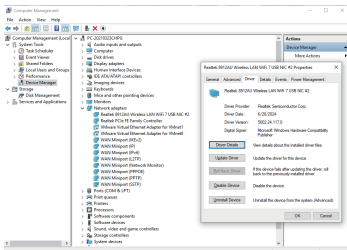
2-6. After restart your computer, the driver installation is complete. Now You can right click my computer, and then choose “Manage” to enter the Computer Management to view the Driver Manager status.




2-7. After entering the management page, click on Device Manager, Network Adapter, and you can see the installed network adapter driver. (Tips: This step requires that the network adapter is connected to the computer.)



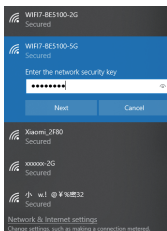
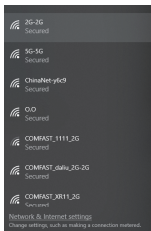
2-8. Double click to view device details, if there is no abnormality, the following figure shows that the driver runs normally, and you can view the driver details.




## 3 Connected network

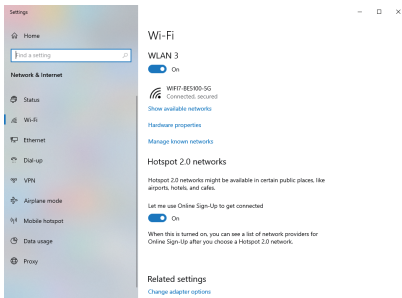
3-1. Please make sure the driver is installed correctly, double click the wireless adapter icon in the lower right corner , then click on the icon and the computer will show you the wireless network which you can connect to.

3-2. Click on the wireless network you want to connect to and enter the password to connect.



## 4 Network connection status

4-1. After the network connection, the computer system icon will change to , then you can right click the icon and choose " Network & Internet " to enter the setting selection interface.



4-2. Click on the "Wi-Fi", then click on the connected WiFi, you can view the current IP address, MAC address, gateway, driver version, etc.

## WIFI7-BE5100-5G

## IP settings

IP assignment: Automatic (DHCP)

[Edit](#)

## Properties

SSID:	WIFI7-BE5100-5G
Protocol:	802.11ax
Security type:	WPA-Personal
Network band:	5 GHz
Network channel:	48
Link-local IPv6 address:	fe80:15c5:8cb8:716f:78bc%108
IPv4 address:	192.169.0.103
IPv4 DNS servers:	202.96.128.86 180.76.76.76
Manufacturer:	Realtek Semiconductor Corp.
Description:	Realtek 8912AU Wireless LAN WiFi 7 USB NIC #2
Driver version:	5002.24.117.0
Physical address (MAC):	00-E0-4C-3D-12-02

[Copy](#)

# Maintenance Regulations

Dear Valued Clients,

Thank you for purchasing **COMFAST** products. To protect your rights and interests in after-sales service, please read the following maintenance regulations.

**The following do not belong to free maintenance ,our company can provide paid service ,please note:**

- Failure to require the installation manual , use ,maintenance, storage led to product failure or damage;
- Beyond the limited warranty , the warranty period;  
Unauthorized alteration, tearing up the product bar code;
- Without authorization to change the settings file or inherent disassemble;
- Unexpected factors or human actions lead to product damage, such as improper input voltage, temperature, watermechanical damage, break, rust or oxidation product of serious,etc;
- The damage caused by the transportation, loading and unloading caused by the customer's return for repair; the product failure or damage caused by force majeure such as earthquake, fire, lightning, etc.; Other non-product itself, design ,technology,manufacturing ,quality and other quality problems causedby the failure damage.



# Copyright Information

## Statement

**Shenzhen Four Seas Global Link Network  
Technology CO.,Ltd.  
Company all rights reserved.**

Without ours official writ permission, no unit or individual shall be copied, reproduced, transcribed or translated in part or whole book. In any form or by any means(electronic,mechanical,printing,recording or other possible means)or for the propagation of goods any commercial, profitable purposes.

**COMFAST** is the registered trademark of Shenzhen Four Seas Global Link Network Technology Co.,Ltd.Company. All other trademarks or registered trademarks mentioned in this document, by respective owners.

Product specifications and information mentioned in this manual are for reference on subject to updates without notice. Unless there are other special agreed, this manual is used only as a user guide. All statements, information, etc. are not constitute any form of guarantee

Manufacturer: Shenzhen Four Seas Global Link Network  
Technology Co.,Ltd.Company

Address: 9th Floor, Building H, Huanan Digital Valley, No. 1 Huanan  
Road, Longhua District, Shenzhen, China

Hotline: +86 755 83790059

Website: [www.comfast.cn](http://www.comfast.cn) / [www.szcomfast.com](http://www.szcomfast.com)