

# **COMFAST**

## **Quick Installation Guide**

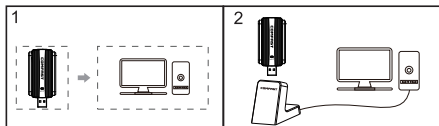


Driver Installation  
Version V1.0

## 1 Hardware Installation

There are two methods to install the network card: (Note: The pictures are simplified schematic diagrams. Please refer to the actual product for details.)

- 1.Plug the network card directly into the USB port of the computer.
2. Connect to the computer's USB port via the USB extension cable base. (The USB extension cable base needs to be purchased separately.)



Attention: When using a desktop computer, it is recommended to use the USB extension cable base to connect to the interface at the back of the computer case (the front USB interfaces of most desktop computers have insufficient power supply or are inoperable). Extending it to the desktop for use will yield better results!

## 2 Driver Installation

2-1 Enter "My Computer", locate the USB driver disk. After opening the driver disk, double - click to install the driver.

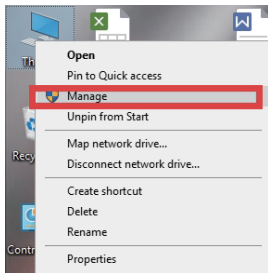


2-2 Wait until the progress bar reaches 100% and then the installation is complete.

### WiFi6 USB 802.11AX Wireless Adapter

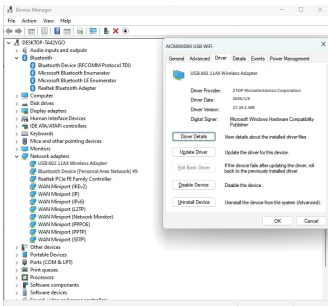


2-3 After restarting, the driver installation is complete. You can move the mouse to "My Computer", right - click and then select "Manage" to enter the management interface and check the driver status.




2-4 After entering the management page, click "Device Manager" and then "Network Adapters" in sequence. You will then be able to see the installed network card driver. (Note: This step requires the network card to remain connected to the computer to be visible.)

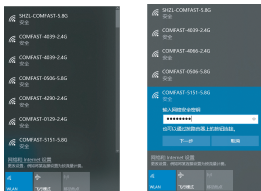
2-5 Double - click to view the device details. If there is no abnormality, the driver is running normally as shown in the following figure, and you can view the driver details.




## 3 Network Connection Settings

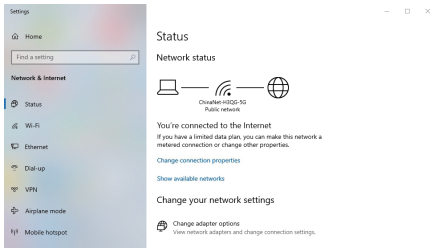
3-1 After confirming that the driver is installed correctly, double-click the wireless network icon in the lower-right corner. Click the icon with the left mouse button , and the connectable wireless networks will be displayed in the lower-right corner of the computer.

3-2 Click the wireless network you want to connect to, enter the password, and then click connect.

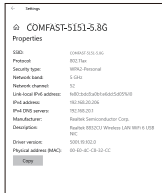
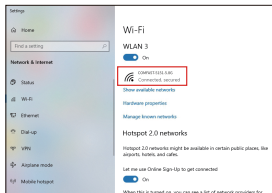


## 4 Network Connection Status

4-1 After the network is connected, the network icon  on the computer system appears. Then, you can right-click on this icon and select "Open Network & Internet settings" to enter the settings selection interface.



4-2 Click the "WLAN" option, and then click to display the connected wireless network. You can then view information such as the current IP address, MAC address, gateway, and driver version of the wireless network.



## Maintenance Regulations

Dear Valued Clients,

Thank you for purchasing a COMFAST products and service to protect your rights, please read the following maintenance regulations.

The following does not belong to free maintenance, our company can provide paid service, please note:

- Failure to require the installation manual, use, maintenance, storage lead to product failure or damage;
- Beyond the limited warranty, the warranty period; Unauthorized alteration, tearing up the product bar code;
- Without authorization to change the settings file or inherent disassemble without authorization;
- Unexpected factors or human actions lead to product damage, such as improper input voltage, temperature, water, mechanical damage, break, rust or serious oxidation of product, etc;
- Other non-product itself, design, technology, manufacturing, quality and other quality problems caused by the failure damage.

## Customer Data

Name	
Address	
Model	
Mac Address	
Machine unit sales	
Sale of machine address	
Date	
Tel	
Post code	
Invoice no	

# Copyright Information

## Statement

Shenzhen Four Seas Global Link Network Technology CO.,Ltd.Company all rights reserved.

Without ours official writ permission, no unit or individual shall be copied, reproduced, transcribed or translated in part or whole book.In any form or by any means(electronic, mechanical, printing,recording or other possible means)or for the propagation of goods any commercial, profitable purposes.

COMFAST is the registered trademark of Shenzhen Four Seas Global Link Network Technology Co.,Ltd.Company. All other trademarks or registered trademarks mentioned in this document,by respective owners.

Product specifications and information mentioned in this manual are for reference on subject to updates without notice. Unless there are other special agreed, this manual is used only as a user guide. All statements, information, etc. are not constitute any form of guarantee.



Manufacturer: Shenzhen Four Seas Global Link Network Technology Co.,Ltd.

Address: 9th Floor, Building H, Huanan Digital Valley, No. 1

Huanan Road, Longhua District, Shenzhen, China

Hotline:0755 83790059 / 83790659

Website:www.szcomfast.com