

COMFAST

Quick Installation Guide



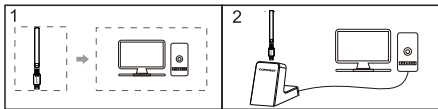
Driver Installation
Version:V 1.0

1 Hardware installation

There are two ways to install the network card

Note: The picture is a simplified schematic diagram, please refer to the actual product for details.

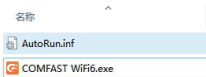
- (1) Insert the network card directly into the USB port of the computer ;
- (2) Connect the computer USB port through the USB extension cord base (USB extension base needs to be purchased separately) ;



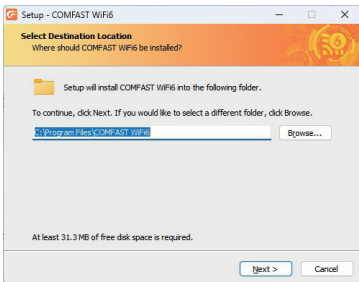
Note: When using a desktop computer, it is recommended to use a USB extension cord base to connect to the port on the back of the computer case (some desktop ports have insufficient power supply or cannot be used), and extend it to the Desktop computer usb ports.

2 Driver Installation

2-1 Go to My Computer, find the WiFi6 setup driver disk, open the driver disk and double click Install COMFAST WiFi6.exe;



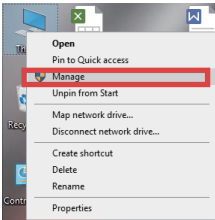
2-2 Open and keep clicking Next to install until the driver installation is complete;



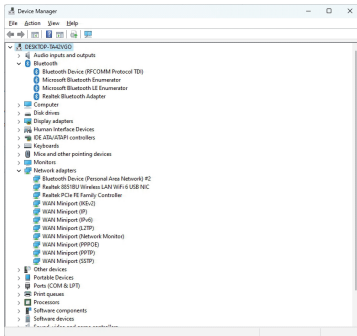
2-3 After the installation is completed, it will ask whether to restart the computer, if there is a work in progress or file being written, you can choose to restart later, if there is nothing else, it is recommended to choose to restart immediately. If there is nothing else, it is recommended that you choose to reboot immediately;



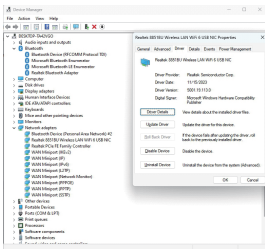
2-4 After restarting, the driver installation is complete, you can move the mouse to My Computer, right-click and select Manage to enter the management interface to view the driver status;



2-5 After entering the management page, click Device Manager, Network Adapter in turn, you can see the installed network card driver (Note: This step requires the network card to be connected to the computer to see it.);



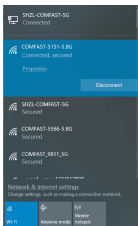
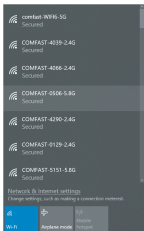
2-6 Double-click to view the device details, if there is no abnormality, the following figure shows that the driver is running normally and can view the driver details and you can view the driver details;




3 Network connection settings

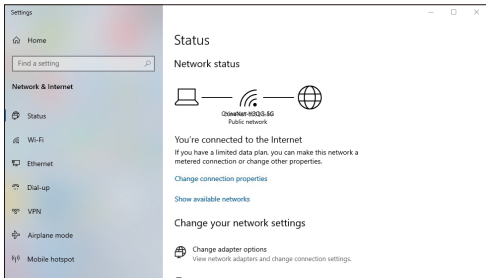
3-1 After confirming that the driver is installed correctly, you can double-click the wireless network card icon in the lower right corner, and click the icon with the left mouse button. The computer will display the connectable wireless;

3-2 Click the wireless network you want to connect to and enter the password to connect

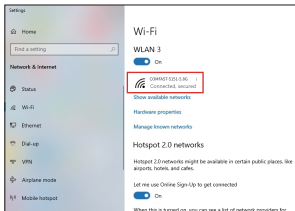


4 Network connection status

4-1 After the network is connected, the icon of the computer system will become highlighted , and then you can right-click the icon and select "Open" Network and Internet "settings" to enter the setting selection interface;

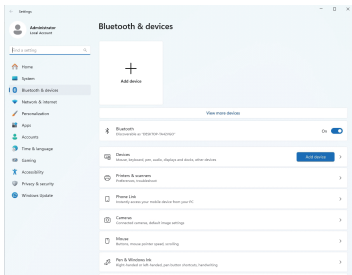


4-2 Click the "Wi-Fi" option, and then click Show connected wireless, you can view the current IP, MAC address, gateway, driver version, etc. of the wireless.

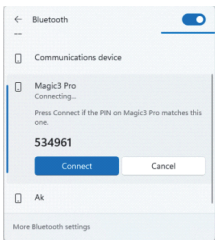
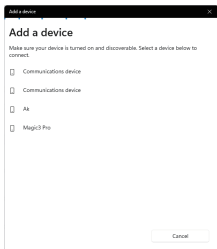


5 Bluetooth connection

5-1 After confirming that the driver is installed correctly, you can double-click the Bluetooth icon  in the lower right corner. The Add Bluetooth Settings screen is displayed.



5-2 Click Add Device in the Settings screen, go to select device type, search for device, and click Device Connection;



Maintenance Regulations

Dear Valued Clients,

Thank you for purchasing a COMFAST products and service to protect your rights, please read the following maintenance regulations.

The following does not belong to free maintenance, our company can provide paid service, please note:

- Failure to require the installation manual, use, maintenance, storage lead to product failure or damage;
- Beyond the limited warranty, the warranty period; Unauthorized alteration, tearing up the product bar code;
- Without authorization to change the settings file or inherent disassemble without authorization;
- Unexpected factors or human actions lead to product damage, such as improper input voltage, temperature, water, mechanical damage, break, rust or serious oxidation of product, etc;
- Other non-product itself, design, technology, manufacturing, quality and other quality problems caused by the failure damage.

Customer Data

Name	
Address	
Model	
Mac Address	
Machine unit sales	
Sale of machine address	
Date	
Tel	
Post code	
Invoice no	

Copyright Information

Statement

Shenzhen Four Seas Global Link Network Technology CO.,Ltd.Company all rights reserved.

Without ours official writ permission, no unit or individual shall be copied, reproduced, transcribed or translated in part or whole book.In any form or by any means(electronic, mechanical, printing,recording or other possible means)or for the propagation of goods any commercial, profitable purposes.

COMFAST is the registered trademark of Shenzhen Four Seas Global Link Network Technology Co.,Ltd.Company. All other trademarks or registered trademarks mentioned in this document,by respective owners.

Product specifications and information mentioned in this manual are for reference on subiect to updates without notice. Unless there are other special agreed, this manual is used only as a user guide. All statements, information, etc. are not constitute any form of guarantee.



Manufacturer: Shenzhen Four Seas Global Link Network Technology Co.,Ltd.

Address: 9th Floor, Building H, Huanan Digital Valley, No. 1 Huanan Road, Longhua District, Shenzhen, China

Hotline:0755 83790059 / 83790659

Website:www.szcomfast.com