

COMFAST

Quick Installation Guide



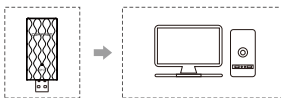
Realtek Driver
M0401072 Version: V1.0

1 Hardware installation

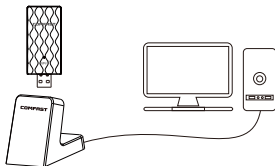
There are two ways to install the network card;

Note: The picture is a simplified schematic diagram, please refer to the actual product for details.

(1) Insert the network card directly into the USB port of the computer;



(2) Connect the computer USB port through the USB extension cord base (USB extension base needs to be purchased separately);



Note: When using a desktop computer, it is recommended to use a USB extension cord base to connect to the port on the back of the computer case (some desktop ports have insufficient power supply or cannot be used), and extend it to the Desktop computer usb ports.

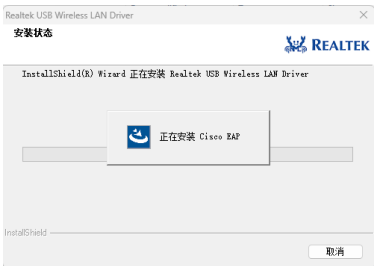
2 Driver Installation

2-1 Open the driver folder, double-click the driver Setup installation file, the default options are completed next;

Driver download: enter "http://www.szcomfast.com" Click on the navigation bar Search for the corresponding model in the "Download Help" search bar, for example: "CF-924AC" and "Click to download".

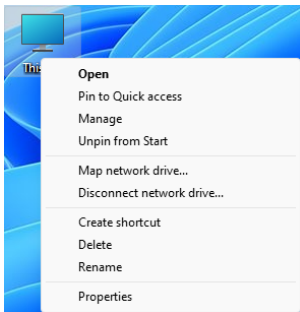
Name	Date modified	Type	Size
EAP	2021/6/15 13:56	File folder	
IHV	2021/6/15 13:56	File folder	
Release notes	2021/6/15 13:56	File folder	
RTWLANU_Driver	2021/6/15 14:03	File folder	
Autorun.inf	2021/6/10 19:20	Setup Information	1 KB
Install.bat	2021/6/10 19:20	Windows Batch File	1 KB
logo.bmp	2021/6/10 19:20	BMP File	12 KB
Setup.exe	2021/6/10 19:20	Application	11,383 KB
setup.iss	2021/6/10 19:20	ISS File	1 KB
Uninstall.bat	2021/6/10 19:20	Windows Batch File	1 KB
Uninstall.iss	2021/6/10 19:20	ISS File	1 KB

2-2 Then the driver will Automatically install.

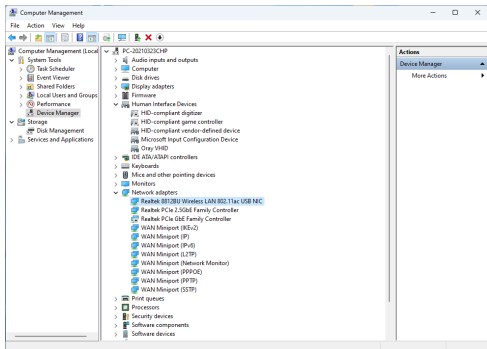


2-3 After the installation is completed, it is recommended to restart the computer. If there is work in progress or files being written, you can restart it later. If there is nothing else, it is recommended to restart immediately;

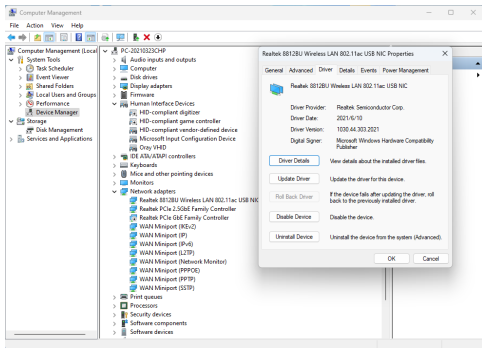
2-4 After restarting, the driver installation is complete, you can move the mouse to My Computer, right-click and select Manage to enter the management interface to view the driver status;




2-5 After entering the management page, click Device Manager, Network Adapter in turn, you can see the installed network card driver (Note: This step requires the network card to be connected to the computer to see it.)

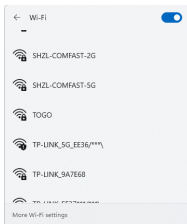


2-6 Double-click to view the device details. If there is no abnormality, the driver is running normally as shown in the figure below and the driver details can be viewed;

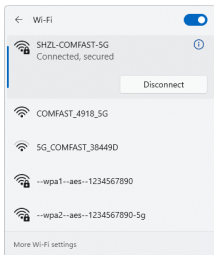


3 Network connection settings


3-1. After confirming that the driver is installed correctly, you can double-click the wireless network card icon  in the lower right corner, and click the icon with the left mouse button. The computer will display the connectable wireless;

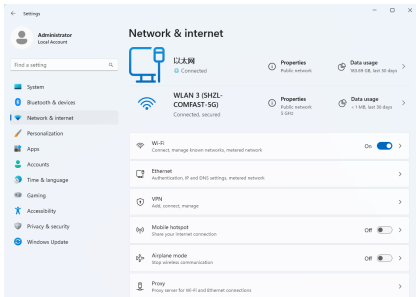


3-2. Click the wireless network you want to connect to and enter the password to connect.

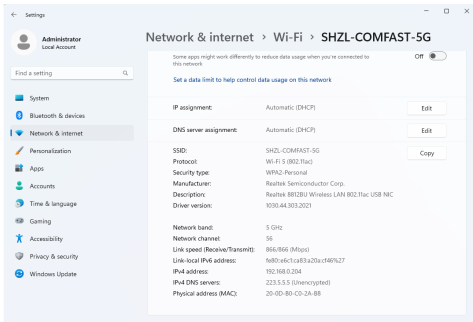
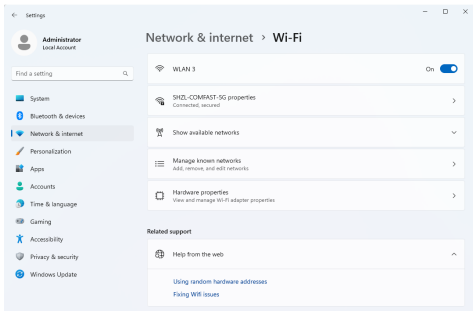


4 Network connection status

4-1. After the network is connected, the computer system icon will change to  , and then you can right-click the icon and select "Open "Network and Internet" settings" to enter the setting selection interface.

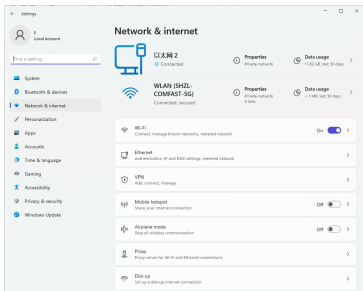


4-2 Click the "Wi-Fi" option, and then click Show connected wireless, you can view the current IP, MAC address, gateway, driver version, etc. of the wireless.

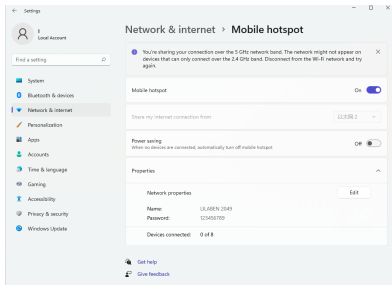


5 WiFi transmitter settings

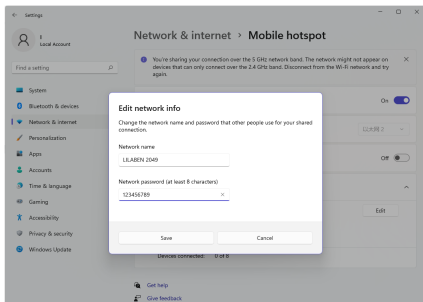
5-1 Open Network & Internet and click to access Mobile Hotspot.



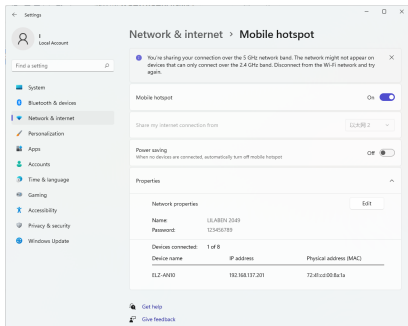
5-2 Click the mobile hotspot switch to turn on the mobile hotspot.



5-3 Click Edit to modify the network name and network password.



5-4 You can connect after editing is complete.



Maintenance Regulations

Dear Valued Clients,

Thank you for purchasing **COMFAST** products. To protect your rights and interests in after-sales service, please read the following maintenance regulations.

The following do not belong to free maintenance, our company can provide paid service, please note:

- Failure to require the installation manual, use, maintenance, storage led to product failure or damage;
- Beyond the limited warranty, the warranty period;
Unauthorized alteration, tearing up the product bar code;
- Without authorization to change the settings file or inherent disassemble;
- Unexpected factors or human actions lead to product damage, such as improper input voltage, temperature, watermechanical damage, break, rust or oxidation product of serious, etc;
- The damage caused by the transportation, loading and unloading caused by the customer's return for repair; the product failure or damage caused by force majeure such as earthquake, fire, lightning, etc.; Other non-product itself, design, technology, manufacturing, quality and other quality problems caused by the failure damage.

Customer Data

Name	
Address	
Model	
MAC No.	
Machine unit sales	
Sale of machine address	
Date of sale machine	
TEL	
Post Code	
Invoice No.	

Certificate Of Qualification

Quality Inspector _____

Production Date _____

Executive Standard _____



YDV 1965-2009

Copyright Information

Statement

**Shenzhen Four Seas Global Link Network
Technology CO.,Ltd.
Company all rights reserved.**

Without ours official writ permission, no unit or individual shall be copied, reproduced, transcribed or translated in part or whole book. In any form or by any means(electronic,mechanical,printing,recording or other possible means)or for the propagation of goods any commercial, profitable purposes.

COMFAST is the registered trademark of Shenzhen Four Seas Global Link Network Technology Co.,Ltd.Company. All other trademarks or registered trademarks mentioned in this document, by respective owners.

Product specifications and information mentioned in this manual are for reference on subject to updates without notice. Unless there are other special agreed, this manual is used only as a user guide. All statements, information, etc. are not constitute any form of guarantee

Manufacturer: Shenzhen Four Seas Global Link Network
Technology Co.,Ltd.Company

Address: 9th Floor, Building H, Huanan Digital Valley, No. 1
Huanan Road, Longhua District, Shenzhen, China

Hotline: +86 755 83790059

Website: www.comfast.cn / www.szcomfast.com