

COMFAST

快速安装指南

Quick Installation Guide



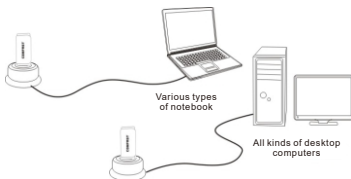
Version 2.0

The first Hardware installation

1. Without powering down the computer, only the card inserted into the corresponding slots in the correct direction. Map with usb adapter as an example.



2. Use USB extension base to connect USB Port on desktop. (USB extension base needs to buy by yourself)



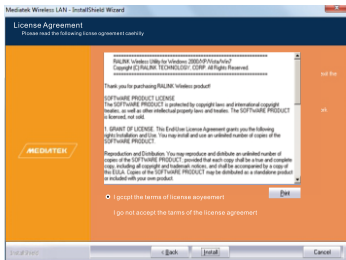
Attention:

A. Suggested to use USB extension base to connect the USB port on back of the desktop. (Most of USB port on front of the desktop are useless.)

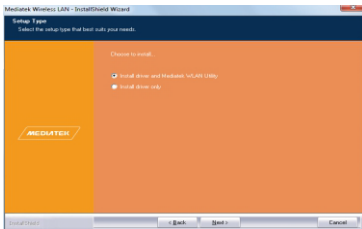
B. Don't use the device if lightning, because Outdoor device are not built in lightning protection.

The second driver installation

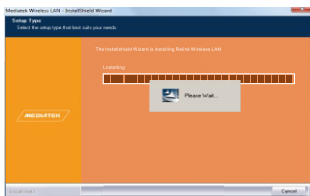
1. Open the driver folder and double-click the driver Setup installation file. The default option is completed in the next step. Driver download: Enter "<http://www.szcomfast.com>" and click "Download Help" in the navigation bar. Search for a specific model in the search box, for example, CF-WU711N, and click Download.





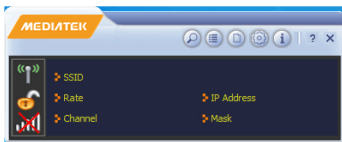
2. Choose to install the driver and Ralink WLAN Utility, and Next;



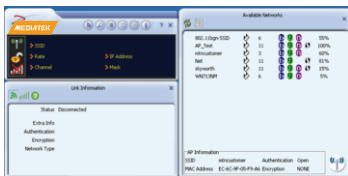
3. Wait to setup;



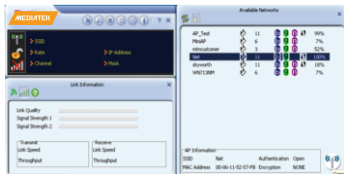
4. When it appear like this  ,Double click icon  , and then appear as follow;



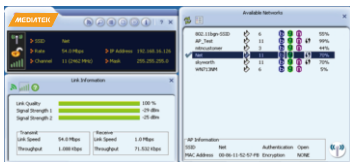
5. Click  and  ,then you can see as follow;




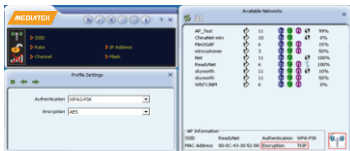
6. Select a SSID you want to connect, click  to connect;



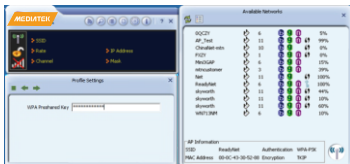
7. Connect successfully




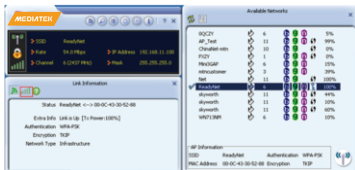
8. If encryption, click  and will appear as follow, click to next;



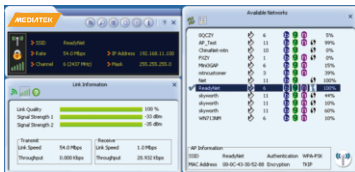
9. Enter the password click  to next;



10. Connect successfully, if you want to view throughput, click 



11. Then, that's OK;



The wireless network Card FAQ

Wireless internet access is often cut off net?

1. Router connection is bad? If there was a loose condition, make sure it is fixed.
2. The power adapter and the quality of voltage compliance requirements, can get a look at the adapter problem is it right?
3. Wireless signal transmission attention is too large or unstable, - check card and routing between whether obstacles too much.
4. Electromagnetic interference, whether near other electromagnetic-wave interference of wireless network card.
5. The wireless network card driver can work normally, recommend the use of the purchase of wireless network card comes with a CD-ROM drive.

Cable using normal, wireless network can not?

1. Wireless connection to the IP address, DNS address is automatically acquired, if not, then set the automatic acquisition.
2. Check the wireless network card and the configuration of the router is consistent, if different, please change the arbitrary end.
3. Check the wireless connection is to obtain IP address, if no access, please link.
4. The router firewall filtering rules whether the wireless network card. If you set the filter rules, proposed to delete rules.

Quick Installation Guide

Statement

**Shenzhen Four Seas Global Link Network
Technology CO.,Ltd.Company
all rights reserved.**

Without ours official writ permission, no unit or individual shall be copied, reproduced, transcribed or translated in part or whole book. In any form or by any means(electronic,mechanical,printing,record-ing or other possible means)or for the propagation of goods any commercial, profitable purposes.

COMFAST is the registered trademark of Shenzhen Four Seas Global Link Network Technology Co.,Ltd.Company. All other trademarks or registered trademarks mentioned in this document, by respective owners.

Product specifications and information mentioned in this manual are for reference on subject to updates without notice. Unless there are other special agreed, this manual is used only as a user guide. All statements, information, etc. are not constitute any form of guarantee.

Manufacturer: Shenzhen Four Seas Global Link Network
Technology Co.,Ltd.Company
Address: Room 607-610,Block B Tao JINDI Electronic
Business Incubation Base, Tenglong Road, Longhua District,
Shenzhen, China
Hotline: 0755 83790059/83790659
Website: www.szcomfast.com