

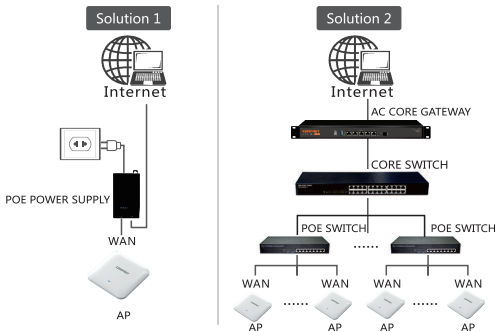
# **COMFAST**

## **Quick Installation Guide**



Wireless AP  
**V1.0**

# 1 Installation Diagram

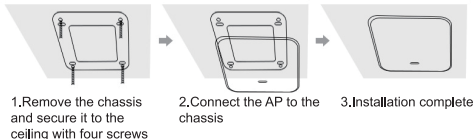


**Note:** Solution 1: Single Device Settings: Get into the web setting page independently.  
Solution 2: Multiple Devices Settings: Do centralized management settings and Local portal by AC core gateway.

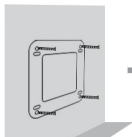
(Note: POE power and other devices which are non standard, pls refer to the packing list.)

## 2 Installation way

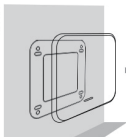
### 2.1 Ceiling-mount Installation



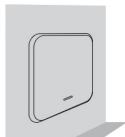
## 2.2 Wall-mount Installation



1.Remove the chassis and fasten it to the wall with four screws



2.Connect the AP to the chassis

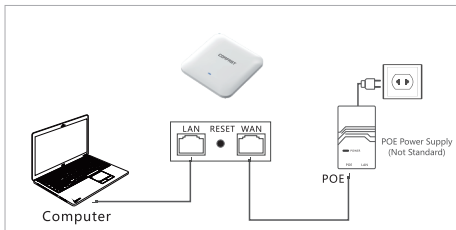


3.Installation complete

**Note:**This quick installation guide is taken the circled ceiling AP for an example. Some of square ceiling AP have 4 screws and pls push from one side to install.

## 3 Single Device Configuration

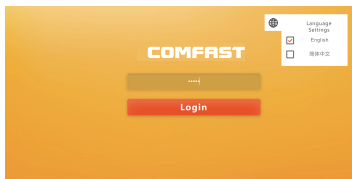
### 3.1 Connection Diagram



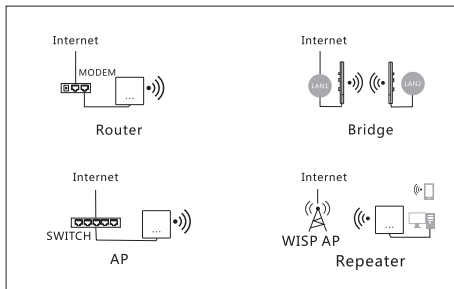
3.2 Set the computer to obtain the IP address automatically, and connect the LAN port of the device to the device management interface.

3.3 The device is defaulted to be fat AP mode. The steps to enter the set interface as follows:

- (1) Under default configuration, power on the device and wait 90 seconds untill the device to start.
- (2) Connect the device' s LAN port with the computer by a network cable.
- (3) Input 192.168.10.1 in the web browser to enter the set interface.
- (4) Open the computer browser, and input 192.168.10.1 to get into the device login page. The device is defaulted as Router Mode. When you login at the first time, you need to set a password. The device language is compatible with Chinese and English to choose, and you can set up the language by the top right corner icon 🌐



3.4 When getting into the setting page, there are four working modes in the Wizard: AP Mode,Bridge Mode,Router Mode, Repeater Mode.



3.5 Click AP mode and set up IP Address and Subnet Mask. The IP address and Subnet mask should be within the same network segment as upper network and can't be conflict with IP address from upper network router. After settings, you can visit the device from the IP address you have set just now by connecting internet with WAN port of the device or POE adapter LAN port.

① Notes: In AP mode, the IP address from the other devices connected the AP will be allocated by the upper network router.

② The AP needs to set an intranet IP address (do not set the same IP address as the upper router). If want to manage the device, Manually set the IP address of the same network segment of the intranet IP.

The screenshot shows a configuration page with an orange header. At the top, a progress bar has three steps: 1. LAN Settings (active), 2. Wireless, and 3. Finish. The main content area is titled 'LAN Settings' and contains two input fields: 'IP Address' with the value '192.168.10.1' and 'Subnet Mask' with the value '255.255.255.0'. A 'Next' button is located at the bottom right of the form.

3.6 AP Mode: You can set up 2.4G/5.8G wireless SSID, password, channel and country in advance. After setting up, the device's WAN port or POE adapter LAN port connected internet, other mobile devices can connect the SSID to surf the internet.

The screenshot shows a configuration page with an orange header. At the top, a progress bar has three steps: 1. LAN Settings, 2. Wireless (active), and 3. Finish. The main content area is titled 'WIFI Unification' with a 'ON' toggle switch. It is divided into two sections: '2.4G Wireless' and '5.8G Wireless'. Each section contains fields for 'SSID', 'Password', 'Network Mode', 'Country', 'Bandwidth', and 'Channel'. The '2.4G Wireless' section has SSID 'COMFAST\_00AC\_2G' and Bandwidth '40MHz'. The '5.8G Wireless' section has SSID 'COMFAST\_00AC\_5G' and Bandwidth '80MHz'. 'Prev' and 'Next' buttons are at the bottom.

3.7 Bridge Mode: Pls ensure the WDS in upper network is enabled.  
 AP device can set up intranet segment(do not set the same IP address as the upper router), and then select the wireless SSID signal you need to bridge(Distinguish between 5.8GHz and 2.4GHz) and input wireless password.  
 (Notes: The password is same as your upper network router)

1 LAN Settings 2 Bridge Settings 3 Wireless Finish

LAN Settings

IP Address 192.168.10.1

Subnet Mask 255.255.255.0

Next

1 LAN Settings 2 Bridge Settings 3 Wireless Finish

Bridge Settings

Scan Band 5.8GHz

Scan Result

No.	BSSID	SSID	Channel	Oper
1	90983845909C	HONOR-SIGATE_5G	36	✔
2	5040110E1F21	COMFAST_7F20_5G	36	✔
3	00E1A6A705F0	COMFAST_7F02_5G	36	✔
4	34F716640C48	JH	40	✔
5	34F716640C48	unknown	40	✔
6	0810767FC8F6	---epa2---1234567890-5g	40	✔
7	408045223347	ZROSL_3348_5G	44	✔
8	200D808A8541	SHZL-COMFAST-5G	36	✔
9	E081A883A2F8	camfax-5G	36	✔
10	200D808A8541	SHZL-COMFAST-5G	36	✔
11	40A58F123358	psml_gponhyaleg----	60	✔

Cancel

Pls set the SSID and password for the device and click "Next" to finish settings.

1 LAN Settings 2 Bridge Settings 3 Wireless Finish

**WiFi Unification** Off

2.4G Wireless

SSID: COMFAST\_00AC\_2G  
Password: Empty or 8-32 Characters

5.8G Wireless

SSID: COMFAST\_00AC\_5G  
Password: Empty or 8-32 Characters

Prev Next

**3.8 Repeater Mode:** The AP device can set the internal network segment (the gateway IP should not be the same as the upper device gateway IP). Next, select the name of the wireless SSID signal that you need to relay (distinguish between 5.8GHz and 2.4GHz) and input wireless password.

(Notes: The password is same as your upper network router).

1 LAN Settings 2 Repeater Settings 3 Wireless Finish

LAN Settings

IP Address: 192.168.10.1  
Subnet Mask: 255.255.255.0

Next

1 LAN Settings 2 Repeater Settings 3 Wireless Finish

Repeater Settings

Scan Band: 5.8GHz

**Scan Result** Refresh

No.	BSSID	SSID	Channel	Oper
1	80:08:30:49:00:8C	HONOR-815A7X_5G	36	🔒 🔍 ⚙️
2	80:4B:11:0E:0A:23	COMFAST_FF20_5G	36	🔒 🔍 ⚙️
3	E8:14:9A:67:05:F8	COMFAST_08ED_5G	36	🔒 🔍 ⚙️
4	05:10:76:7F:CMF9	--wpad--wpad-1234567890-5g	40	🔒 🔍 ⚙️
5	34:F7:16:84:0E:A8	JH	40	🔒 🔍 ⚙️
6	34:F7:16:84:0E:A8	unknown	40	🔒 🔍 ⚙️
7	D8:32:14:F3:80:52	calpal-5G	44	🔒 🔍 ⚙️
8	40:90:A5:22:33:47	3980L_1044_5G	44	🔒 🔍 ⚙️
9	28:60:88:6A:85:E1	SHZL-COMFAST-5G	56	🔒 🔍 ⚙️
10	63:E1A9:83:AD:F9	comfast-5G	56	🔒 🔍 ⚙️
11	20:0D:80:BA:87:9D	SHZL-COMFAST-5G	56	🔒 🔍 ⚙️

Next

Pls set the SSID and password for the device and click "Next" to finish settings.

1

2

3

4

LAN Settings

Repeater Settings

Wireless

Finish

WiFi Unification

2.4G Wireless

SSID

COMFAST\_00AC\_2G

Password

Empty or 8-32 Characters

5.8G Wireless

SSID

COMFAST\_00AC\_5G

Password

Empty or 8-32 Characters

Prev

Next

3.9 Router Mode: There are three ways to surf the internet: PPPOE, Static, and DHCP. (Pls refer to router setting as reference)

1

2

3

4

WAN Settings

LAN Settings

Wireless

Finish

WAN Settings

☐ PPPOE

☐ Static

☒ DHCP

IP Address

automatic

Subnet Mask

automatic

Gateway

automatic

DNS

automatic

Next

# Quick Installation Guide

## Statement

**Shenzhen Four Seas Global Link Network  
Technology CO.,Ltd.Company  
all rights reserved.**

Without ours official writ permission, no unit or individual shall be copied, reproduced, transcribed or translated in part or whole book. In any form or by any means(electronic,mechanical,printing,recording or other possible means)or for the propagation of goods any commercial, profitable purposes.

**COMFAST** is the registered trademark of Shenzhen Four Seas Global Link Network Technology Co.,Ltd.Company. All other trademarks or registered trademarks mentioned in this document, by respective owners.

Product specifications and information mentioned in this manual are for reference on subject to updates without notice. Unless there are other special agreed, this manual is used only as a user guide. All statements, information, etc. are not constitute any form of guarantee.

Manufacturer: Shenzhen Four Seas Global Link Network  
Technology Co.,Ltd.Company  
Address: Room 607-610,Block B Tao JINDI Electronic  
Business Incubation Base, Tenglong Road, Longhua District,  
Shenzhen, China  
Hotline: 0755 83790059/83790659  
Website: [www.szcomfast.com](http://www.szcomfast.com)