

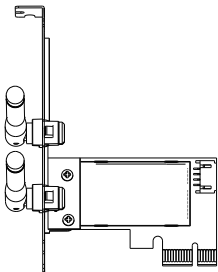
COMFAST

Quick Installation Guide



Driver Installation

Wireless Adapter x1



Fixing Screw x1

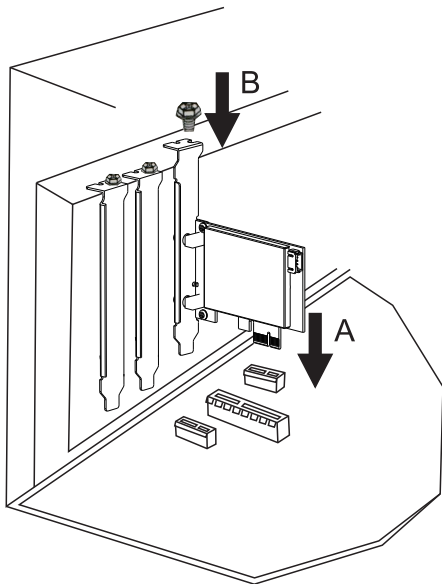


Bluetooth Cable x1

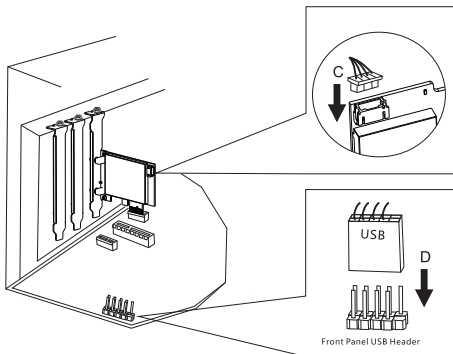


1 Hardware Installation

1.1 Insert the wireless adapter into the PCI-Ex1 slot (Also compatible with PCI-Ex4, PCI-Ex8, PCI-Ex16 slots) and screw the bezel.



1.2 Plug the Bluetooth cable into the wireless adapter and the motherboard interface..



2 Wireless Adapter Driver Installation

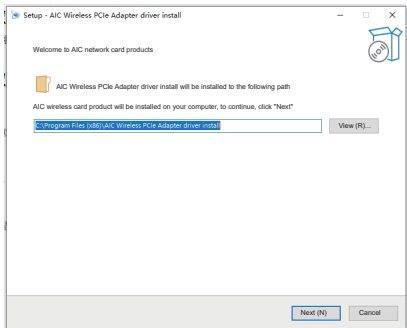
2-1. Download the driver from COMFAST, open the corresponding driver folder, and double-click to run the installation program. (Note: If the installation file is a compressed package, decompress it before installing it.)

Download Driver :

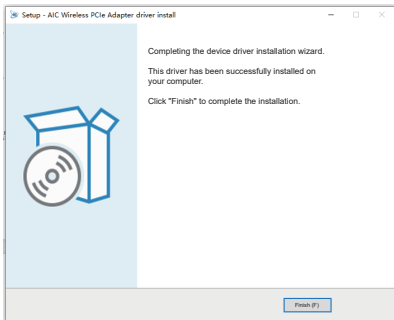
<http://www.comfast.com.cn/index.php?m=content&c=index&a=lists&catid=81>, Go to the website, search for the driver of the corresponding model to download



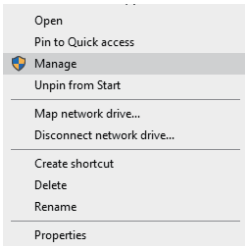
2-2. Click Next to install the program.




2-3. The driver will be installed automatically. Click Finish to exit the installation page after the installation is complete.



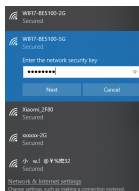
2-4. Right-click the PC and click Manage to go to the Device Manager page. Double-click the NIC device at the network adapter to go to the details of the NIC device, and check whether the connected network and driver are normal.



3 Connected network

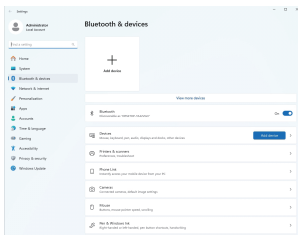
3-1. Please make sure the driver is installed correctly, double click the wireless adapter icon in the lower right corner  , then click on the icon and the computer will show you the wireless network which you can connect to.

3-2. Click on the wireless network you want to connect to and enter the password to connect.



4 Bluetooth device connection

4-1. Click the computer Settings to enter "Bluetooth and other devices", and click "Add device" for Bluetooth matching and connection.



Maintenance Regulations

Dear Valued Clients,

Thank you for purchasing **COMFAST** products. To protect your rights and interests in after-sales service, please read the following maintenance regulations.

The following does not belong to free maintenance, our company can provide paid service, please note:

- Failure to require the installation manual, use, maintenance, storage led to product failure or damage;
- Beyond the limited warranty, the warranty period;
Unauthorized alteration, tearing up the product bar code;
- Without authorization to change the settings file or inherent disassemble;
- Unexpected factors or human actions lead to product damage, such as improper input voltage, temperature, watermechanical damage, break, rust or oxidation product of serious, etc;
- Other non-product itself, design, technology, manufacturing, quality and other quality problems caused by the failure damage.

Copyright Information

Statement

Shenzhen Four Seas Global Link Network Technology CO.,Ltd.Company
all rights reserved.

Without ours official writ permission, no unit or individual shall be copied, reproduced, transcribed or translated in part or whole book. In any form or by any means(electronic,mechanical,printing,recording or other possible means)or for the propagation of goods any commercial, profitable purposes.

COMFAST is the registered trademark of Shenzhen Four Seas Global Link Network Technology Co.,Ltd.Company. All other trademarks or registered trademarks mentioned in this document, by respective owners.

Product specifications and information mentioned in this manual are for reference on subject to updates without notice. Unless there are other special agreed, this manual is used only as a user guide. All statements, information, etc. are not constitute any form of guarantee



Manufacturer: Shenzhen Four Seas Global Link Network Technology Co.,Ltd.Company

Address: 9th Floor, Building H, Huanan Digital Valley, No. 1 Huanan Road, Longhua District, Shenzhen, China

Hotline: +86 755 83790059

Website: en.comfast.com.cn