

COMFAST

Quick Installation Guide



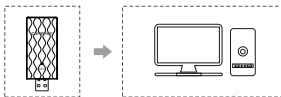
Driver Installation
Version:V 1.0

1 Hardware installation

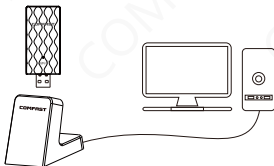
There are two ways to install the network card;

Note: The picture is a simplified schematic diagram, please refer to the actual product for details.

(1) Insert the network card directly into the USB port of the computer;



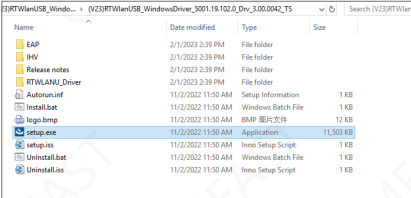
(2) Connect the computer USB port through the USB extension cord base (USB extension base needs to be purchased separately);



Note: When using a desktop computer, it is recommended to use a USB extension cord base to connect to the port on the back of the computer case (some desktop ports have insufficient power supply or cannot be used), and extend it to the Desktop computer usb ports.

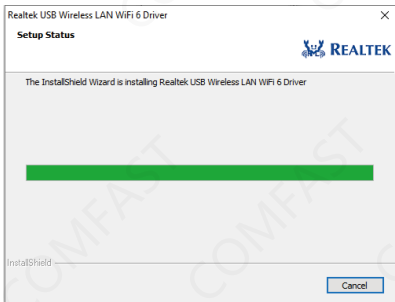
2 Driver Installation

2-1 Please go to the official website <http://www.szcomfast.com>
Click the navigation bar, "Download Help" search bar, search for "CF-972AX driver version" and click to download the driver. Open the driver folder, double click Setup to open the installer

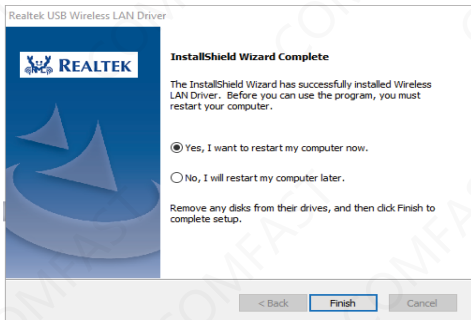


Name	Date modified	Type	Size
EAP	2/1/2023 2:39 PM	File folder	
IHV	2/1/2023 2:39 PM	File folder	
Release notes	2/1/2023 2:39 PM	File folder	
RTWLANU_Driver	2/1/2023 2:39 PM	File folder	
Autorun.inf	11/2/2022 11:50 AM	Setup Information	1 KB
Install.bat	11/2/2022 11:50 AM	Windows Batch File	1 KB
logo.bmp	11/2/2022 11:50 AM	BMP 图片文件	12 KB
setup.exe	11/2/2022 11:50 AM	Application	11,503 KB
setup.iss	11/2/2022 11:50 AM	Inno Setup Script	1 KB
Uninstall.bat	11/2/2022 11:50 AM	Windows Batch File	1 KB
Uninstall.iss	11/2/2022 11:50 AM	Inno Setup Script	1 KB

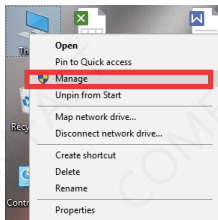
2-2 Then the driver will Automatically install.



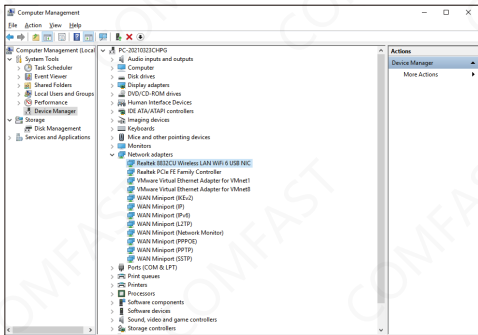
2-3 After the installation is complete, you will be asked whether to restart the computer. If there is work in progress or files being written, you can choose to restart later. If there is nothing else, it is recommended to restart immediately;



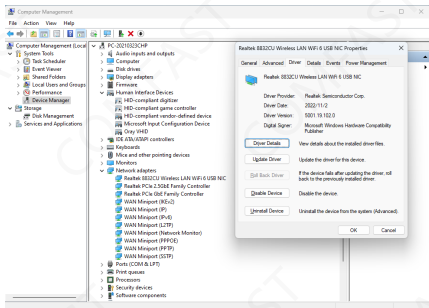
2-4 After restarting, the driver installation is complete, you can move the mouse to My Computer, right-click and select Manage to enter the management interface to view the driver status;




2-5 After entering the management page, click Device Manager, Network Adapter in turn, you can see the installed network card driver (Note: This step requires the network card to be connected to the computer to see it.)

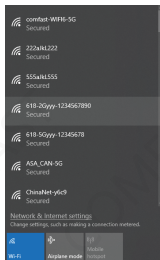


2-6 Double-click to view the device details. If there is no abnormality, the driver is running normally as shown in the figure below and the driver details can be viewed;



3 Network connection settings


3-1. After confirming that the driver is installed correctly, you can double-click the wireless network card icon  in the lower right corner, and click the icon with the left mouse button. The computer will display the connectable wireless

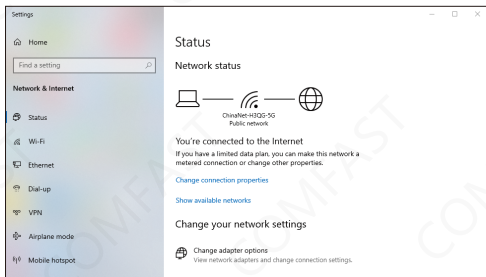


3-2. Click the wireless network you want to connect to and enter the password to connect.

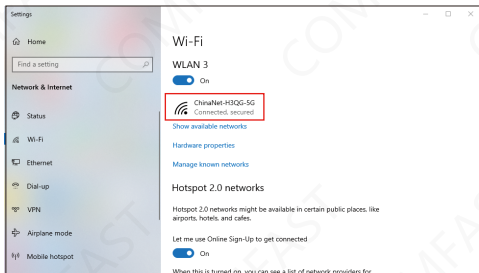


4 Network connection status

4-1. After the network is connected, the computer system icon will change to , and then you can right-click the icon and select "Open "Network and Internet" settings" to enter the setting selection interface.



4-2 Click the "Wi-Fi" option, and then click Show connected wireless, you can view the current IP, MAC address, gateway, driver version, etc. of the wireless.



Maintenance Regulations

Dear Valued Clients,

Thank you for purchasing **COMFAST** products. To protect your rights and interests in after-sales service, please read the following maintenance regulations.

The following do not belong to free maintenance, our company can provide paid service, please note:

- Failure to require the installation manual, use, maintenance, storage led to product failure or damage;
- Beyond the limited warranty, the warranty period;
Unauthorized alteration, tearing up the product bar code;
- Without authorization to change the settings file or inherent disassemble;
- Unexpected factors or human actions lead to product damage, such as improper input voltage, temperature, watermechanical damage, break, rust or oxidation product of serious, etc;
- The damage caused by the transportation, loading and unloading caused by the customer's return for repair; the product failure or damage caused by force majeure such as earthquake, fire, lightning, etc.; Other non-product itself, design, technology, manufacturing, quality and other quality problems caused by the failure damage.

Customer Data

Name	
Address	
Model	
MAC No.	
Machine unit sales	
Sale of machine address	
Date of sale machine	
TEL	
Post Code	
Invoice No.	

Certificate Of Qualification

Quality Inspector _____

Production Date _____

Executive Standard YD/T 1965-2009 _____



Copyright Information

Statement

**Shenzhen Four Seas Global Link Network
Technology CO.,Ltd.
Company all rights reserved.**

Without our official written permission, no unit or individual shall be copied, reproduced, transcribed or translated in part or whole book. In any form or by any means (electronic, mechanical, printing, recording or other possible means) or for the propagation of goods any commercial, profitable purposes.

COMFAST is the registered trademark of Shenzhen Four Seas Global Link Network Technology Co., Ltd. Company. All other trademarks or registered trademarks mentioned in this document, by respective owners.

Product specifications and information mentioned in this manual are for reference on subject to updates without notice. Unless there are other special agreements, this manual is used only as a user guide. All statements, information, etc. are not constitute any form of guarantee

Manufacturer: Shenzhen Four Seas Global Link Network
Technology Co., Ltd. Company
Address: Room 607-610, Block B Tao JINDI Electronic
Business Incubation Base, Tenglong Road, Longhua
District, Shenzhen, China
Hotline: +86 755 83790059
Website: www.comfast.cn / www.szcomfast.com