

COMFAST

Quick Installation Guide



Driver Installation
Version 1.0

1 Hardware installation

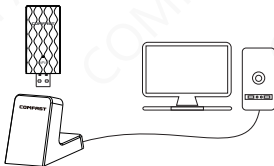
There are two ways to install the network card ;

Note: The picture is a simplified schematic diagram, please refer to the actual product for details.

(1) Insert the network card directly into the USB port of the computer ;



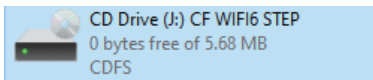
(2) Connect the computer USB port through the USB extension cord base (USB extension base needs to be purchased separately);



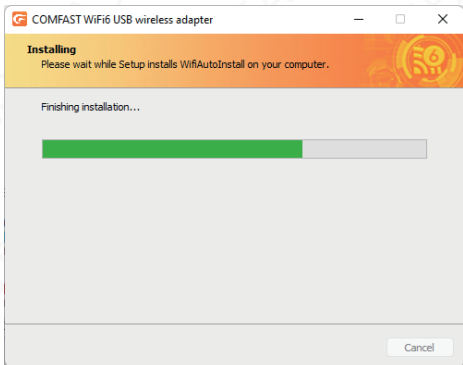
Note: When using a desktop computer, it is recommended to use a USB extension cord base to connect to the port on the back of the computer case (some desktop ports have insufficient power supply or cannot be used), and extend it to the Desktop computer usb ports.

2 Driver Installation

2-1 The software installation process under each Windows 10/11 system is similar. The following installation takes Windows 10 system as an example. Insert the network card into the USB3.0 port, and choose to run “CD Drive (J:) CF WIFI6 STEP” in my computer.

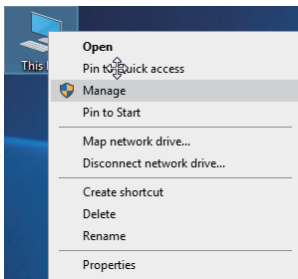


2-2 Open the program and follow the prompts to install the driver.

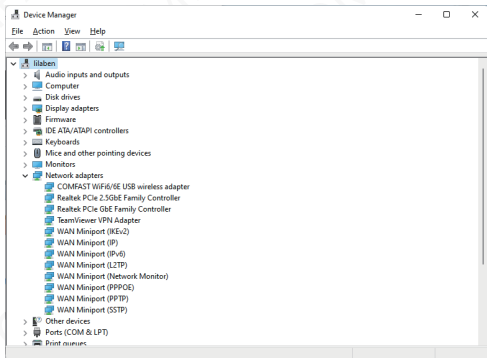


2-3 After the installation is complete, it is recommended to restart the computer. If there is work in progress or documents being written, you can restart it later. If there is nothing else, it is recommended to restart immediately.

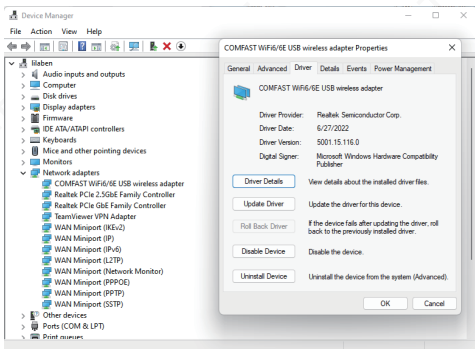
2-4 After restarting, the driver installation is complete, you can move the mouse to My Computer, right-click and select Manage to enter the management interface to view the driver status;




2-5 After entering the management page, click Device Manager, Network Adapter in turn, you can see the installed network card driver (Note: This step requires the network card to be connected to the computer to see it.)

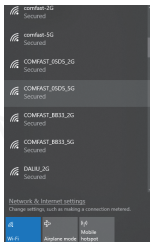


2-6 Double-click to view the device details. If there is no abnormality, the driver is running normally as shown in the figure below and the driver details can be viewed;

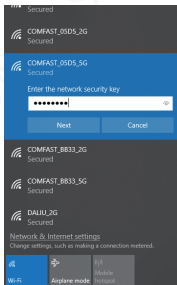


3 Network connection settings


3-1. After confirming that the driver is installed correctly, you can double-click the wireless network card icon  in the lower right corner, and click the icon with the left mouse button. The computer will display the connectable wireless

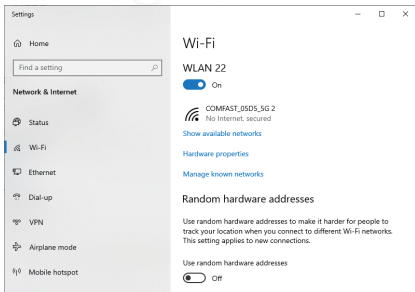


3-2. Click the wireless network you want to connect to and enter the password to connect.



4 Network connection status

4-1. After the network is connected, the computer system icon will change to , and then you can right-click the icon and select "Open "Network and Internet" settings" to enter the setting selection interface.



4-2 Click the "Wi-Fi" option, and then click Show connected wireless, you can view the current IP, MAC address, gateway, driver version, etc. of the wireless.

Network & internet > Wi-Fi > COMFAST_05D5_5G

IP assignment:	Automatic (DHCP)	Edit
----------------	------------------	------

DNS server assignment:	Automatic (DHCP)	Edit
------------------------	------------------	------

SSID:	COMFAST_05D5_5G	Copy
Protocol:	Wi-Fi 6 (802.11ax)	
Security type:	WPA2-Personal	
Manufacturer:	Realtek Semiconductor Corp.	
Description:	COMFAST WiFi6/6E USB wireless adapter	
Driver version:	5001.15.116.0	

Network band:	5 GHz
---------------	-------

Network channel:	36
------------------	----

Link speed (Receive/Transmit):	1201/1201 (Mbps)
--------------------------------	------------------

IPv6 address:	fdd0:f039:b4f3::199
	fdd0:f039:b4f3:0:34bd:a06d:3054:f042

Link-local IPv6 address:	fe80::34bd:a06d:3054:f042%56
--------------------------	------------------------------

IPv6 DNS servers:	fdd0:f039:b4f3::1 (Unencrypted)
-------------------	---------------------------------

IPv4 address:	192.168.10.123
---------------	----------------

IPv4 DNS servers:	192.168.10.1 (Unencrypted)
-------------------	----------------------------

Physical address (MAC):	00-E0-4C-B8-32-01
-------------------------	-------------------

Maintenance Regulations

Dear Valued Clients,

Thank you for purchasing **COMFAST** products. To protect your rights and interests in after-sales service, please read the following maintenance regulations.

The following do not belong to free maintenance ,our company can provide paid service ,please note:

- Failure to require the installation manual , use ,maintenance, storage led to product failure or damage;
- Beyond the limited warranty , the warranty period;
Unauthorized alteration, tearing up the product bar code;
- Without authorization to change the settings file or inherent disassemble;
- Unexpected factors or human actions lead to product damage, such as improper input voltage, temperature, watermechanical damage, break, rust or oxidation product of serious,etc;
- The damage caused by the transportation, loading and unloading caused by the customer's return for repair; the product failure or damage caused by force majeure such as earthquake, fire, lightning, etc.; Other non-product itself, design ,technology,manufacturing ,quality and other quality problems causedby the failure damage.

Customer Data

Name	
Address	
Model	
MAC No.	
Machine unit sales	
Sale of machine address	
Date of sale machine	
TEL	
Post Code	
Invoice No.	

Certificate Of Qualification

Quality Inspector _____

Production Date _____

Executive Standard YD/T 1965-2009 _____



Copyright Information

Statement

Shenzhen Four Seas Global Link Network Technology CO.,Ltd.

Company all rights reserved.

Without ours official writ permission, no unit or individual shall be copied, reproduced, transcribed or translated in part or whole book. In any form or by any means(electronic,mechanical,printing,recording or other possible means)or for the propagation of goods any commercial, profitable purposes.

COMFAST is the registered trademark of Shenzhen Four Seas Global Link Network Technology Co.,Ltd.Company. All other trademarks or registered trademarks mentioned in this document, by respective owners.

Product specifications and information mentioned in this manual are for reference on subject to updates without notice. Unless there are other special agreed, this manual is used only as a user guide. All statements, information, etc. are not constitute any form of guarantee

Manufacturer: Shenzhen Four Seas Global Link Network Technology Co.,Ltd.Company

Address: Room 607-610,Block B Tao JINDI Electronic Business Incubation Base, Tenglong Road, Longhua District, Shenzhen, China

Hotline: +86 755 83790059

Website: www.comfast.cn / www.szcomfast.com