

COMFAST

Quick Installation Guide



MTK Auto Installation Version
Version:1.0

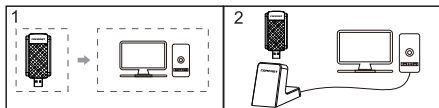
1 Hardware installation

There are two ways to install the network card

Note: The picture is a simplified schematic diagram, please refer to the actual product for details.

(1) Insert the network card directly into the USB port of the computer ;

(2) Connect the computer USB port through the USB extension cord base (USB extension base needs to be purchased separately) ;



Note: When using a desktop computer, it is recommended to use a USB extension cord base to connect to the port on the back of the computer case (some desktop ports have insufficient power supply or cannot be used), and extend it to the Desktop computer usb ports.

Note:

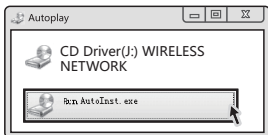
1. This installation guide is only used for WiFi receiving mode. If you need to use AP mode, you have to download related driver on our website: www.szcomfast.com.

2. The different configuration in different computer may cause the self-drive function is not workable. Pls open "Computer" and double check "CD Driver(J:) WIRELESS NETWORK " to start self-drive function.

2 Auto-Installation

It is similar installation steps in Windows 10/8.1/8/7/XP. Take Windows 7 as an example as below.

Insert the wireless adapter into the computer, then click "Apply Autoinst. exe".



3 Installation Finished

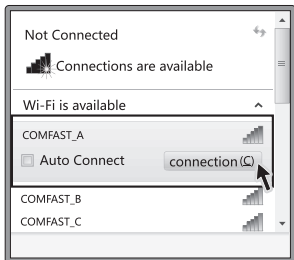
Pls wait for wireless adapter to be initialized. It will be show down automatically after it is finished, then wireless connection icon will appear at the right corner in the computer 📶

The wireless network card is initializing, please wait..... 62%



4 Network Connection

Click wireless connection icon 📶 and then choose the available WiFi signal.



Maintenance Regulations

Dear Valued Clients,

Thank you for purchasing a **COMFAST** products and service to protect your rights, please read the following maintenance regulations.

The following does not belong to free maintenance ,our company can provide paid service ,please note:

- Failure to require the installation manual , use ,maintenance, storage led to product failure or damage;
- Beyond the limited warranty , the warranty period;
Unauthorized alteration, tearing up the product bar code;
- Without authorization to change the settings file or inherent disassemble without authorization;
- Unexpected factors or human actions lead to product damage, such as improper input voltage, temperature, water/mechanical damage, break, rust or oxidation product of serious, etc;
- Other non-product itself, design ,technology, manufacturing, quality and other quality problems caused by the failure damage.

Customer Data

Name	
Address	
Model	
MAC No.	
Machine unit sales	
Sale of machine address	
Date of sale machine	
TEL	
Post Code	
Invoice No.	

Certificate Of Qualification

Quality Inspector _____

Production Date _____

Executive Standard _____



YD/T 1965-2009

Copyright Information

Statement

**Shenzhen Four Seas Global Link Network
Technology CO.,Ltd.Company
all rights reserved.**

Without ours official writ permission, no unit or individual shall be copied, reproduced, transcribed or translated in part or whole book. In any form or by any means(electronic,mechanical,printing,recording or other possible means)or for the propagation of goods any commercial, profitable purposes.

COMFAST is the registered trademark of Shenzhen Four Seas Global Link Network Technology Co.,Ltd.Company. All other trademarks or registered trademarks mentioned in this document, by respective owners.

Product specifications and information mentioned in this manual are for reference on subject to updates without notice. Unless there are other special agreed, this manual is used only as a user guide. All statements, information, etc. are not constitute any form of guarantee

Manufacturer: Shenzhen Four Seas Global Link Network
Technology Co.,Ltd.Company

Address: 9th Floor, Building H, Huanan Digital Valley, No. 1
Huanan Road, Longhua District, Shenzhen, China

Hotline: +86 755 83790059

Website: en.comfast.com.cn